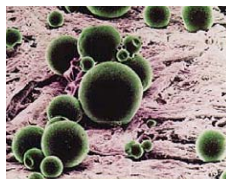


Further Advances in Mating Disruption Technology, 2005

Andrew Kahn, Mike Doerr and Jay Brunner
Dept. of Entomology
WSU-Tree Fruit Research and Extension Center
Wenatchee, WA

The Shape of Things to Come?

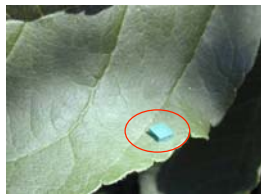
Three alternatives to hand applied dispensers



Suttera CheckMate CM-F



Scentry NoMate CM Fiber



Hercon Disrupt Micro-Flake CM

- Pheromone released from hollow fibers, edge of flake, or bead wall.
- Fibers, flakes and ULV all require special applicator equipment.
- Fibers and Flakes stick to tree with adhesive.
- Large number of point sources (≈20,000/a) compete with females.

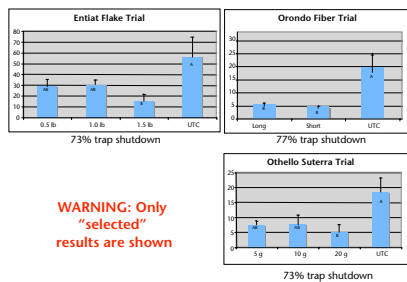
- A new set of application difficulties
- Must wait for "Target" to grow
- Delayed application: some mating occurs
- Must use ovicide at Petal Fall (**Oil, Rimon, Intrepid**)
- BUT: most growers need supplemental sprays anyway



Or Cause For Nostalgia?

Small Plot Trial Results

Promising Results



WARNING: Only "selected" results are shown

Does Trap Shutdown Equal Control?

- All plots had supplemental sprays and little damage
- We did not include a "positive control" of Isomate C+
- However, MSU found similar levels of trap shutdown in small plots of Isomate C+
- "LOOKS PROMISING"

EXPERIMENTAL PRODUCTS EXPERIMENTAL APPLICATORS

- Growers would rather spray than apply dispensers by hand
- Having thousands of lower release-rate point sources may enhance false trail mechanism:

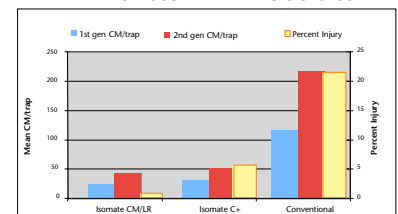
Mating Disruption FALSE TRAIL FOLLOWING



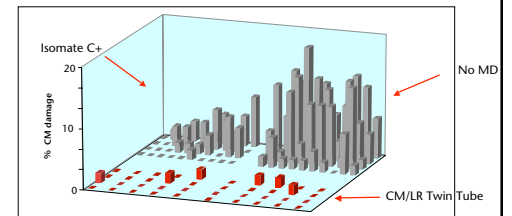
www.tfrec.wsu.edu

Isomate C+ and CM/LR Twin Tube

Brewster Twin Tube Site



Mating Disruption Makes a Difference Even Under Extreme Pressure



Map of damage. All parts of 40 ac block had season-long spray program

- All "sprayable" products demonstrated ability to significantly suppress trap catch
- Advances in experimental applicators will allow for larger scale testing
- More experience needed with all three technologies to optimize performance
- Hand applied dispensers continue to be the industry standard for successful mating disruption

Conclusions